

ACTA-RELIEF™ LTS ORDER FORM



POSITIONING BACK, PLANAR WITH LATERAL SUPPORTS

Acta-Relief Patent Pending



Shown with Compass® 4 Quick Release 2 Point Hardware.
Cover appearance may vary with hardware selection.

Company Name/ACCT #: _____

P.O. Number: _____

Requested By: _____

Phone: _____ Fax: _____

Email: _____

Ship To: _____

Patient Reference: _____

ACTA-RELIEF LTS-LCS-NP-01/04/2017

If you would like an official quotation, please email completed form to regina@lcsating.ie, or fax 00353 71 9163918

If you have any queries, please contact the office on 00353 71 9163905

1 SIZE SELECTION

Required

*Length (L) refers to the actual size dimension of the support from bottom to top edge.

Sizes available with 2 POINT Mounting Hardware

LENGTH*	22"				
	20"				
	18"				
	16"				
	14"				
	12"				
		14"	16"	18"	20"
		FRAME WIDTH			

Sizes available are subject to hardware being used.

LENGTH*	22"	14W22L	16W22L	18W22L	20W22L
	20"	14W20L	16W20L	18W20L	20W20L
	18"	14W18L	16W18L	18W18L	20W18L
	16"	14W16L	16W16L	18W16L	20W16L
	14"	14W14L	16W14L	18W14L	20W14L
	12"	14W12L	16W12L	18W12L	20W12L
		14"	16"	18"	20"
		FRAME WIDTH			

Sizes available with 4 POINT Mounting Hardware

LENGTH*	22"	14W22L	16W22L	18W22L	20W22L
	20"	14W20L	16W20L	18W20L	20W20L
	18"	14W18L	16W18L	18W18L	20W18L
	16"	14W16L	16W16L	18W16L	20W16L
	14"	14W14L	16W14L	18W14L	20W14L
	12"				
		14"	16"	18"	20"
		FRAME WIDTH			

Sizes available with POWER Mounting Hardware

LENGTH*	22"	14W22L	16W22L	18W22L	20W22L
	20"	14W20L	16W20L	18W20L	20W20L
	18"	14W18L	16W18L	18W18L	20W18L
	16"	14W16L	16W16L	18W16L	20W16L
	14"	14W14L	16W14L	18W14L	20W14L
	12"	14W12L	16W12L	18W12L	20W12L
		14"	16"	18"	20"
		FRAME WIDTH			

ARLTS-BS

Please fill in one of the above with dimensions from the size charts to the right.

Example Part: **ARLTS-BS14W16L**

Hardware will be selected in Section 2.

2 COVER & HARDWARE SELECTION

Required

2.1 COVER SELECTION

Both fabrics are latex-free. Fabric selection is for the support surface only. Other fabrics used in cover construction remain the same.



COMFORT-TEK™ is a smooth, easily cleaned surface. The fluid protection aids in infection control.



STRETCH-AIR™ has comfortable stretch, air transmission and heat dissipation. It is not fluid resistant.

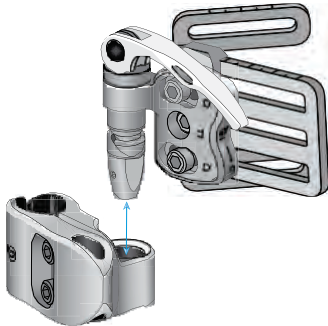
COMFORT-TEK™ Cover
(COMFORT-TEK)

STRETCH-AIR™ Cover
(STRETCH-AIR)

2.2 HARDWARE STYLE

COMPASS® 4 QUICK RELEASE

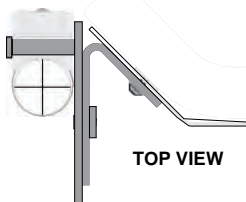
Price included in back support purchase



QUICK RELEASE 2 POINT
(Q-COMPASS)

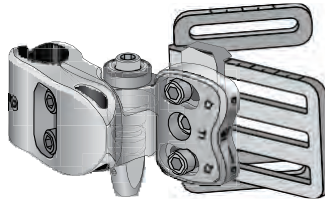
QUICK RELEASE 4 POINT
(Q-COMPASS4)

4 POINT hardware is required on all 24"W back supports using Compass® 4 hardware.



COMPASS® 4 FIXED

Price included in back support purchase



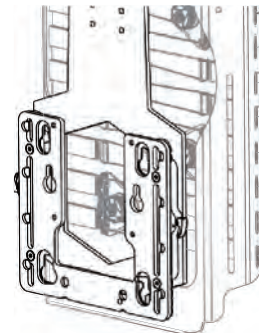
FIXED fully adjustable hardware requires tools for back support removal

FIXED 2 POINT
(NQ-COMPASS)

FIXED 4 POINT
(NQ-COMPASS4)

COMPASS® POWER MOUNT

UPCHARGE APPLIES



POWER MOUNT hardware has 8" of height adjustment in ½" increments without using tools.

QUANTUM w/ TRU BALANCE 3
(PMB-QUANTUM)

PERMOBIL w/ CORPUS 3G
(PMB-PERMOBIL)

QUICKIE w/ 3.7 POWER
(PMB-QUICKIE)

ROVI w/ MOTION CONCEPTS*
(PMB-ROVI)

*Using Power Mount Hardware on ROVI requires mounting to the RECESSED PLANAR INTERFACE PLATE available when ordering the Motion Concepts Seating System. Drilling is required for mounting.

3 LATERAL TRUNK SUPPORT SELECTION

3.1 Required (3.2 Optional)

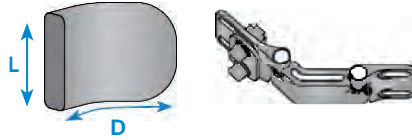
3.1 LATERAL TRUNK SUPPORT

Price included in back support purchase

Length (L) refers to the actual size dimension of the support from top to bottom edge.
Depth (D) refers to the actual size dimension of the support from anterior to posterior edge.

- LTS back supports come with moldable stainless steel supports and rigid mounting hardware.
- Hardware is width and depth adjustable. Height adjustable on back support shell. Adjustments require tools.

MOLDABLE SUPPORT RIGID HARDWARE

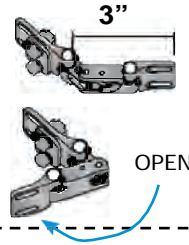


Size	Cover Style	
4" D x 3" L	COMFORT-TEK™ (LAT-4D3L-COMFORT-TEK)	
	STRETCH-AIR™ (LAT-4D3L-STRETCH-AIR)	
5" D x 4" L	COMFORT-TEK™ (LAT-5D4L-COMFORT-TEK)	
	STRETCH-AIR™ (LAT-5D4L-STRETCH-AIR)	
6" D x 4" L	COMFORT-TEK™ (LAT-6D4L-COMFORT-TEK)	
	STRETCH-AIR™ (LAT-6D4L-STRETCH-AIR)	
7" D x 5" L	COMFORT-TEK™ (LAT-7D5L-COMFORT-TEK)	
	STRETCH-AIR™ (LAT-7D5L-STRETCH-AIR)	

COMFORT-TEK™
is a smooth, easily cleaned surface. The fluid protection aids in infection control.

STRETCH-AIR™
has comfortable stretch, air transmission and heat dissipation.

3.2 ADDITIONAL LATERAL TRUNK SUPPORT HARDWARE OPTIONS



SWING-AWAY HARDWARE UPCHARGE APPLIES

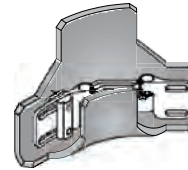
LEFT	LTL-SF-K	RIGHT	LTR-SF-K
	Left		Right
	Extra Left		Extra Right

Hardware is width and depth adjustable. Height adjustable on back support shell. Adjustments require tools.



EXTRA LINKS UPCHARGE APPLIES

LEFT	LT1-LINK	RIGHT	LT1-LINK
	1 Extra Link		1 Extra Link
	2 Extra Links		2 Extra Links
	3 Extra Links		3 Extra Links
	4 Extra Links		4 Extra Links



PROTECTIVE LATERAL HARDWARE COVER UPCHARGE APPLIES

LT1-PROTECT2			
	Left		Right
	Extra Left		Extra Right

Cover wraps around hardware and closes with hook and loop attachment.

4 BACKSUPPORT ADD-ON SELECTIONS

Optional

4.1 COLOR UPCHARGE APPLIES

Accent colors are applied via colored piping. Placement of the piping may vary by back support size and mounting hardware. If no colors are selected, our standard silver reflective piping is used at no additional cost.



Color Location

RED (AC-RED)
PURPLE (AC-PURPLE)
PINK (AC-PINK)
BLUE (AC-BLUE)
GREEN (AC-GREEN)
REMOVE (AC-REMOVE)

4.2 EMBROIDERY UPCHARGE APPLIES

A. THREAD COLOR OPTIONS

RED (EMB-RED)	BLUE (EMB-BLUE)
PURPLE (EMB-PURPLE)	GREEN (EMB-GREEN)
PINK (EMB-PINK)	SILVER (EMB-SILVER)

B. FONT OPTIONS

Helvetica (EMB-Helvetica)	Twilight (EMB-Twilight)
Garamond (EMB-Garamond)	Script (EMB-Script)

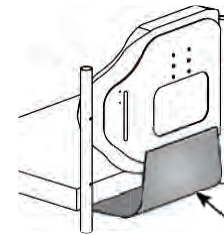
C. WORD ONE

WORD TWO (optional)

*ADDITIONAL LEAD TIMES MAY APPLY

4.3 PRIVACY FLAP UPCHARGE APPLIES

This flap connects with hook & loop attachment between the seat and back for added privacy.



Privacy Flap

PRIVACY FLAP (PV-FLAP)

5.1

HEAD SUPPORT PAD STYLE

UPCHARGE APPLIES

Length (L) refers to the actual size dimension of the support from bottom to top edge.

W		Pad Firmness	
L	6W x 3½L	Soft	BL-HSP1-6W3L
		Extra Soft	BL-HSP2-6W3L
L	8W x 4L	Soft	BL-HSP1-8W4L
		Extra Soft	BL-HSP2-8W4L
L	10W x 5L with adjustable wings	Soft	BL-HSP1-10W5L
		Extra Soft	BL-HSP2-10W5L
L	14W x 5L with adjustable wings	Soft	BL-HSP1-14W5L
		Extra Soft	BL-HSP2-14W5L
L	18W x 5L with adjustable wings	Soft	BL-HSP1-18W5L
		Extra Soft	BL-HSP2-18W5L
W			

5.2

PAD COVER MATERIAL

	FOR SKIN PROTECTION & SHEAR REDUCTION. NOT FLUID RESISTANT.
	FOR FLUID PROTECTION & AN EASILY CLEANED SURFACE.
	FOR AIR TRANSMISSION & HEAT DISSIPATION.
	GlideWear® (GLIDEWEAR)
	Comfort-Tek (COMFORT-TEK)
	Stretch-Air (STRETCH-AIR)

5.3

HEAD SUPPORT HARDWARE

HEAD SUPPORT BRACKET & HARDWARE

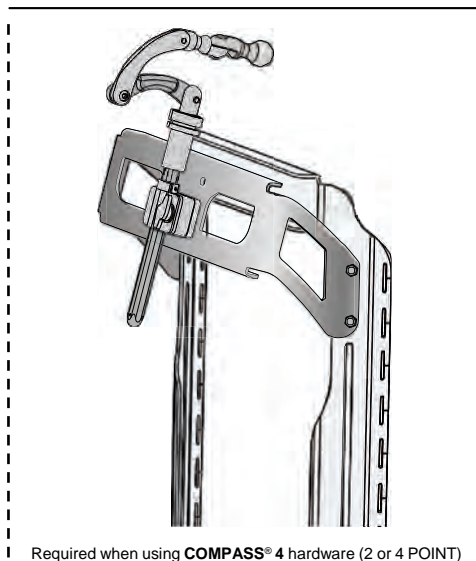
UPCHARGE APPLIES

HEAD SUPPORT BRACKET ONLY*

UPCHARGE APPLIES

HEAD SUPPORT HARDWARE

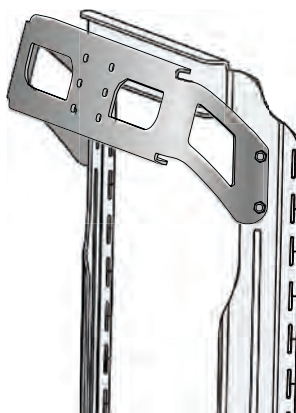
UPCHARGE APPLIES



Required when using COMPASS® 4 hardware (2 or 4 POINT)

	14W Bracket and Hardware (BL-HSH-FX-AR14W)
	16W Bracket and Hardware (BL-HSH-FX-AR16W)
	18W Bracket and Hardware (BL-HSH-FX-AR18W)
	20W Bracket and Hardware (BL-HSH-FX-AR20W)

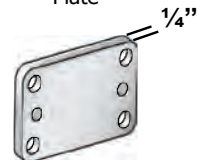
*Purchase required when using a non-Comfort Company head support with COMPASS® 4 (2 or 4 POINT) Hardware.



	14W Bracket Only (HSH-AR14W)
	16W Bracket Only (HSH-AR16W)
	18W Bracket Only (HSH-AR18W)
	20W Bracket Only (HSH-AR20W)



Extra Spacer Plate



	Removable Hardware* (BL-HSH-FX)
	Extra Spacer Plate (BL-HSH-SPCR)

*Only available for Acta-Relief™ LTS when using COMPASS® POWER MOUNT Hardware